



Date: 04/20/12

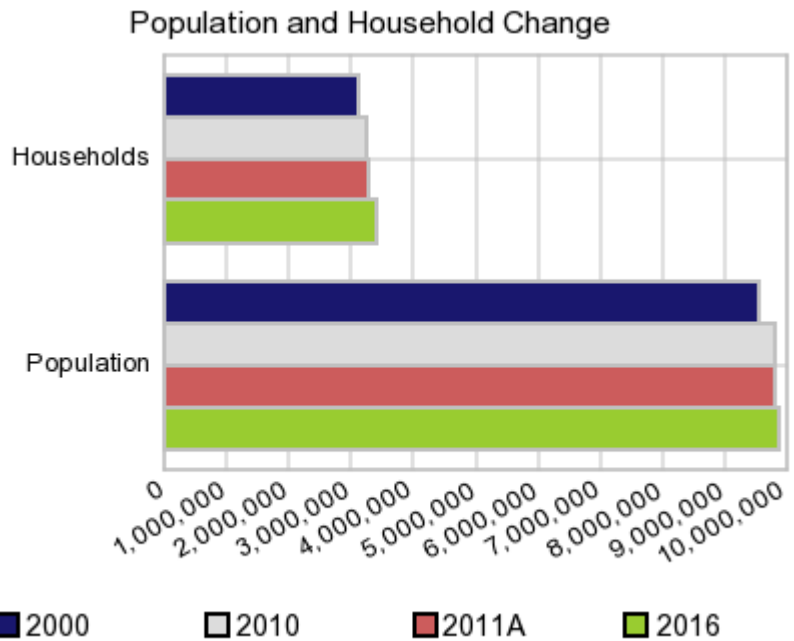
Current Geography Selection: (1 Selected) Counties: Los Angeles County

Executive Summary Report with Charts

Population Demographics:

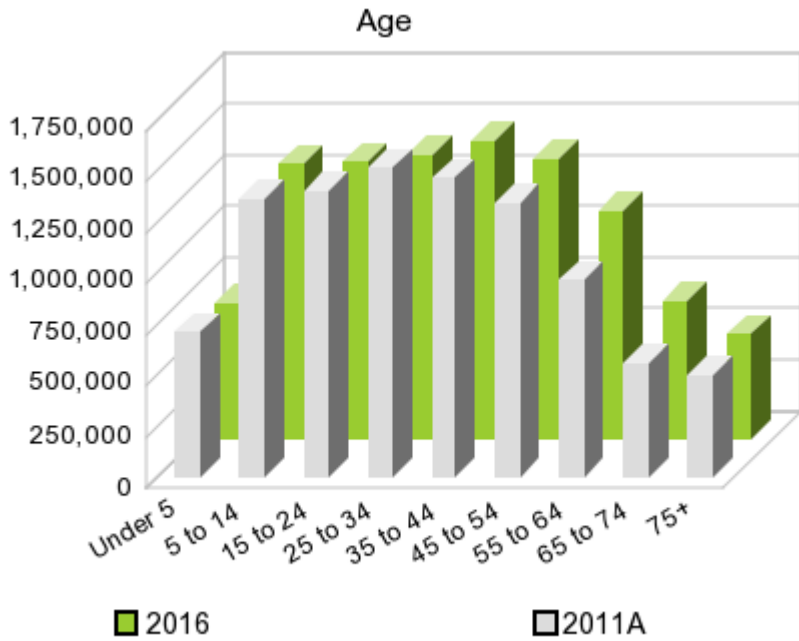
The number of households in the study area in 2000 was **3,133,771** and changed to **3,241,204** in 2010, representing a change of **3.4%**. The household count in 2011A was **3,268,459** and the household projection for 2016 is **3,397,874**, a change of **4.0%**.

The population in the study area in 2000 was **9,519,330** and in 2010 it was **9,818,605**, roughly a **3.1%** change. The population in 2011A was **9,811,389** and the projection for 2016 is **9,870,705** representing a change of **0.6%**.



	2000 Census	2010 Census	2011A Estimate	2016 Projection	Percent Change	
					2000 to 2010	2011 to 2016
Total Population	9,519,330	9,818,605	9,811,389	9,870,705	3.1%	0.6%
Total Households	3,133,771	3,241,204	3,268,459	3,397,874	8.4%	4.0%

Population by Age



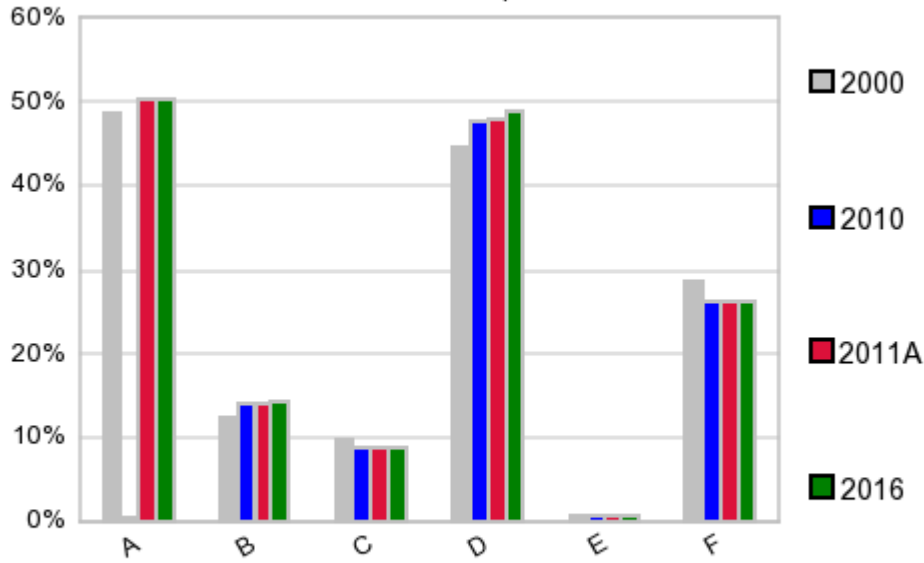
In 1990, the median age of the total population in the study area was **31**, and in 2000, it was **32**. The median age in 2011A is **35** and it is predicted to change in five years to **36** years. In 2011A, females represented **50.5%** of the population with a median age of **36** and males represented **49.6%** of the population with a median age of **33** years. In 2011A, the most prominent age group in this geography is **Age 25 to 34** years. The age group least represented in this geography is **75 +** years.

Age Groups*

	1990 Census		2000 Census		2011A Estimate		2016 Projection		Percent Change	
		%		%		%		%	1990 to 2000	2011 to 2016
0 to 4	736,280	8.3%	737,631	7.8%	706,326	7.2%	662,641	6.7%	0.2%	-6.2%
5 to 14	1,233,064	13.9%	1,525,699	16.0%	1,366,068	13.9%	1,340,284	13.6%	23.7%	-1.9%
15 to 19	638,130	7.2%	683,466	7.2%	706,819	7.2%	668,277	6.8%	7.1%	-5.5%
20 to 24	807,736	9.1%	701,837	7.4%	691,489	7.0%	686,400	7.0%	-13.1%	-0.7%
25 to 34	1,757,781	19.8%	1,581,722	16.6%	1,509,802	15.4%	1,395,218	14.1%	-10.0%	-7.6%
35 to 44	1,336,650	15.1%	1,517,478	15.9%	1,470,873	15.0%	1,456,120	14.8%	13.5%	-1.0%
45 to 54	845,370	9.5%	1,148,612	12.1%	1,340,752	13.7%	1,371,794	13.9%	35.9%	2.3%
55 to 64	647,626	7.3%	696,220	7.3%	965,247	9.8%	1,111,562	11.3%	7.5%	15.2%
65 to 74	507,456	5.7%	492,833	5.2%	555,091	5.7%	669,230	6.8%	-2.9%	20.6%
75 +	353,133	4.0%	433,840	4.6%	498,924	5.1%	509,149	5.2%	22.9%	2.1%

Population by Race/Ethnicity

Race and Ethnicity Percent Composition



In 2011A, the predominant race/ethnicity category in this study area is **White**. The race & ethnicity category least represented in this geography is **American Indian, Alaska Native**.

A: White
B: Asian Pac Islidr
C: Black
D: Hispanic
E: Amer Indian or Alaska Native
F: Other or Multi Race

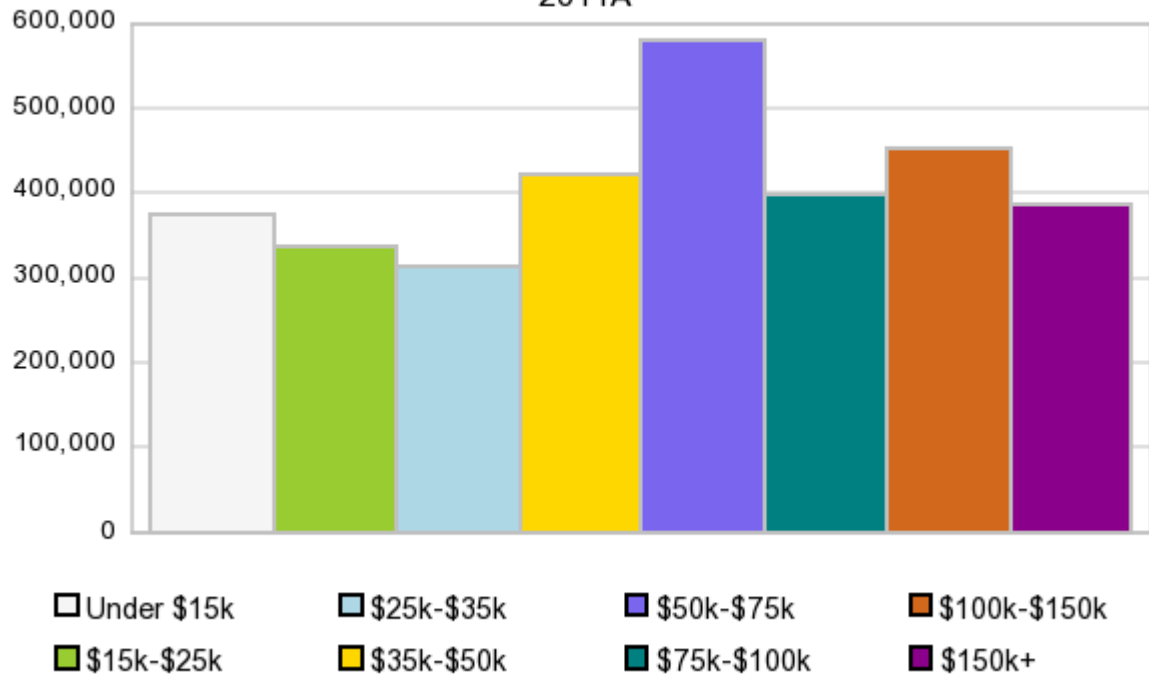
Race & Ethnicity

	2000		2010		2011A		2016		Percent Change	
	Census	%	Census	%	Estimate	%	Projection	%	2000 to 2010	2011 to 2016
White	4,637,055	48.7%	4,936,599	50.3%	4,931,320	50.3%	4,951,389	50.2%	6.5%	0.4%
Black	930,957	9.8%	856,874	8.7%	856,000	8.7%	864,381	8.8%	-8.0%	1.0%
American Indian or Alaska Native	76,988	0.8%	72,828	0.7%	72,759	0.7%	72,785	0.7%	-5.4%	0.0%
Asian/Hawaiian/PI	1,164,553	12.2%	1,372,959	14.0%	1,373,757	14.0%	1,390,327	14.1%	17.9%	1.2%
Some Other Race	2,239,996	23.5%	2,140,632	21.8%	2,101,432	21.4%	2,112,670	21.4%	-4.4%	0.5%
Two or More Races	469,781	4.9%	438,713	4.5%	476,162	4.9%	479,157	4.9%	-6.6%	0.6%
Hispanic Ethnicity	4,242,212	44.6%	4,687,889	47.7%	4,708,430	48.0%	4,817,708	48.8%	10.5%	2.3%
Not Hispanic or Latino	5,277,118	55.4%	5,130,716	52.3%	5,102,947	52.0%	5,053,012	51.2%	-2.8%	-1.0%

Households by Income

Households by Income Group 2011A

In 2011A the predominant household income category in this study area is **\$50K - \$75K**, and the income group that is least represented in this geography is **\$25K - \$35K**.



HH Income Categories*

	1990 Census		2000 Census		2011A Estimate		2016 Projection		Percent Change	
	Count	%	Count	%	Count	%	Count	%	1990 to 2000	2011 to 2016
\$0 - \$15,000	606,234	20.3%	533,447	17.0%	375,413	11.5%	339,208	10.0%	-12.0%	-9.6%
\$15,000 - \$24,999	453,644	15.2%	397,951	12.7%	337,523	10.3%	328,762	9.7%	-12.3%	-2.6%
\$25,000 - \$34,999	434,221	14.5%	380,766	12.2%	313,812	9.6%	300,367	8.8%	-12.3%	-4.3%
\$35,000 - \$49,999	517,282	17.3%	471,933	15.1%	421,204	12.9%	414,321	12.2%	-8.8%	-1.6%
\$50,000 - \$74,999	519,005	17.4%	558,080	17.8%	580,363	17.8%	599,144	17.6%	7.5%	3.2%
\$75,000 - \$99,999	223,400	7.5%	318,244	10.2%	397,760	12.2%	435,977	12.8%	42.5%	9.6%
\$100,000 - \$149,999	144,137	4.8%	276,754	8.8%	454,296	13.9%	526,574	15.5%	92.0%	15.9%
\$150,000 +	91,356	3.1%	196,599	6.3%	388,111	11.9%	453,511	13.3%	115.2%	16.9%
Average Hhld Income	\$47,348		\$61,812		\$82,932		\$93,380		30.5%	12.6%
Median Hhld Income	\$35,013		\$42,575		\$57,216		\$62,273		21.6%	8.8%
Per Capita Income	\$16,097		\$20,349		\$28,501		\$33,014		26.4%	15.8%

*This Census 2010 data has not yet been released

Current year data is for the year **2011**, 5 year projected data is for the year **2016**. More About Our Data.
Demographic data © 2011 by Experian/Applied Geographic Solutions.

Business List data © 2011 by D&B®. All rights reserved. All D&B information is powered by DUNSRight™, D&B's Quality Process.

Alteryx, DemographicsNow.com and the Alteryx and DemographicsNow.com logos are trademarks of Alteryx, Inc.
All rights reserved.

Privacy Statement | License Agreement